

Polyurethane film backing

- Water proof, bacteria barrier
- Prevent external friction
- Managing the micro environment

SAF absorption&retention layer

- Enhance absorption capacity
- Improve the water-locking performance

Non-woven distribution layer

- transfer the exudates to the super absorbent layer

Foam absorbent layer

- prevent wound maceration
- provide a moist wound environment
- reduce the risk of infection

Y Cut: flex technology

- Extra conformable
- Flex cutting core supports mobility

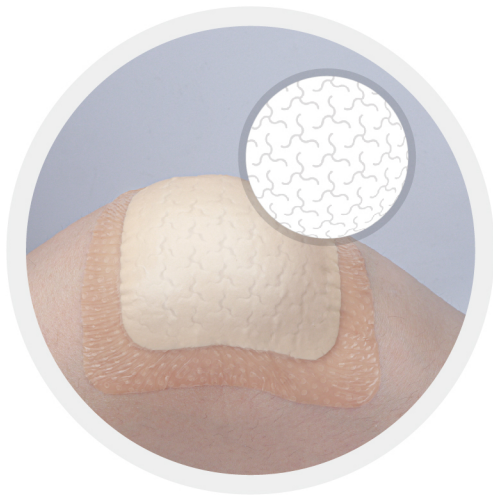
Silicone contact layer

- border without perforation increase the adhesion and prevent crimping
 - friendly to sensitive and fragile skin
- prevent adhere to the skin and avoid secondary damage
 - reduce the pain of dressing changes

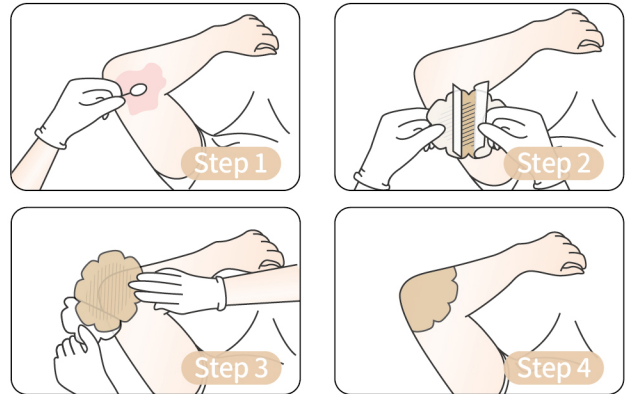
SILICONE FOAM DRESSING

DESCRIPTION

Alexer® silicone foam dressing-border flex is indicated for moderately to heavily exuding wounds, such as diabetic foot ulcers, venous leg ulcers, pressure injuries, skin tears, and traumatic wounds.



APPLICATIONS



Flex technology

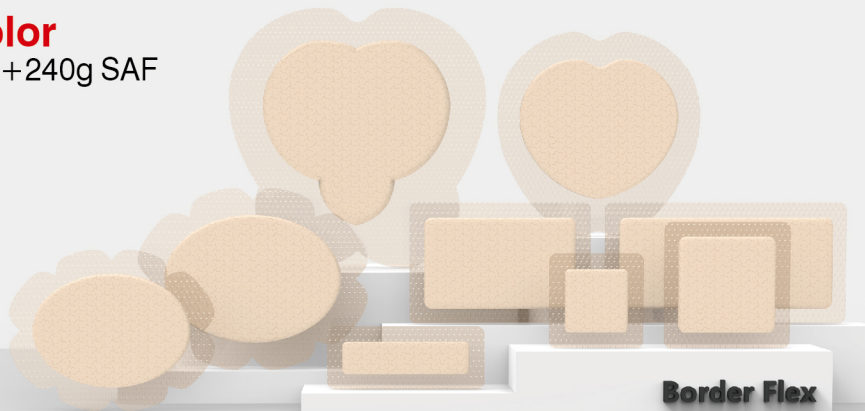
Five layer construction with Flex Technology in the absorbent layer.




Enables 360° stretch, for improved stay-on-ability and conformability.

Silicone gel brings less painful when dress changing and reduces risk of maceration.

○ Skin Color

2mm foam + 240g SAF



Type	Size	Package	Ref.No.	Type	Size	Package	Ref.No.
 Square	5X12.5cm	5pcs/bx,80bxes/ctn	S10016001	 Multiple	7.8X10cm	5pcs/bx,40bxes/ctn	S10016009
	7.5X7.5cm	5pcs/bx,40bxes/ctn	S10016002		13X16cm	5pcs/bx,40bxes/ctn	S10016010
	10X10cm	5pcs/bx,40bxes/ctn	S10016003		15X19cm	5pcs/bx,40bxes/ctn	S10016011
	12.5X12.5cm	5pcs/bx,40bxes/ctn	S10016004	 Sacrum	18X18cm	5pcs/bx,40bxes/ctn	S10016012
	10X15cm	5pcs/bx,40bxes/ctn	S10016005		23X23cm	5pcs/bx,40bxes/ctn	S10016013
	10X20cm	5pcs/bx,40bxes/ctn	S10016006				
	10X25cm	5pcs/bx,40bxes/ctn	S10016007				
	10X30cm	5pcs/bx,40bxes/ctn	S10016008				