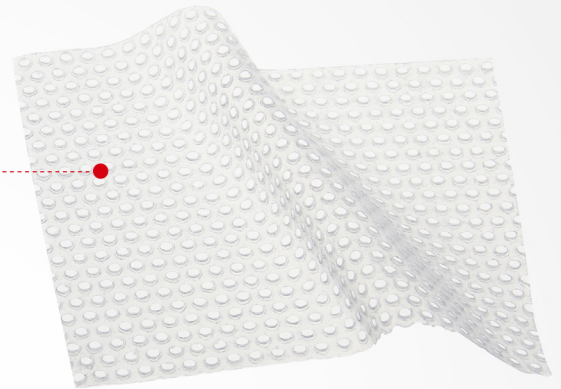


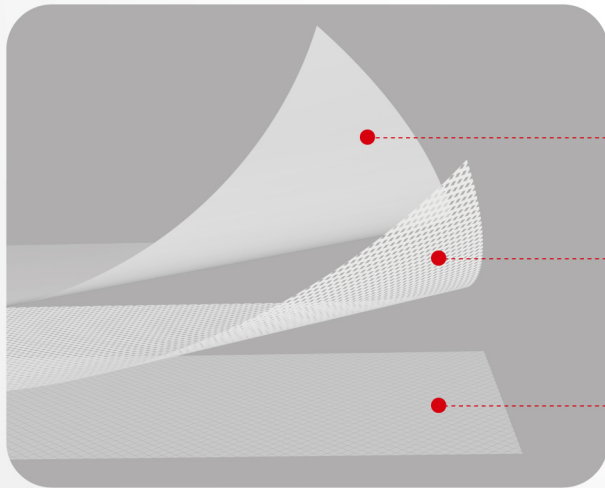
ONE-SIDED ADHERENT

Silicone Wound Contact Layer

- High transparency net structure promotes rapid, even exudate distribution
- Sealed the wound margins to minimize maceration
- Flexible, gentle adhesion for enhanced comfort and wear time



DOUBLE-SIDED ADHERENT



Protective Layer

Secures the dressing during application

Silicone Wound Contact Layer

- Promotes rapid, even exudate distribution
- Flexible, gentle adhesion for enhanced comfort and wear time

Releasing Liners

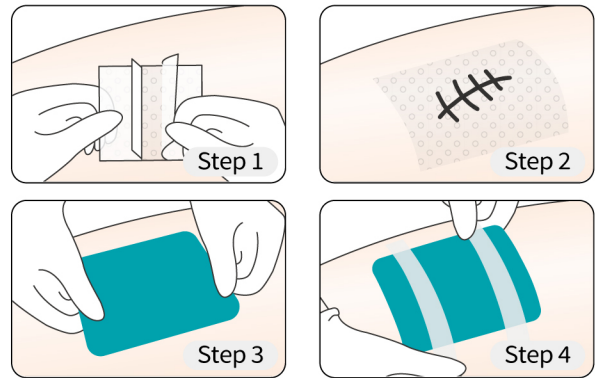
Easy peel off

SUPER ABSORBENT DRESSING

◇ Non Adherent

HOW TO USE IT

- STEP 1** Clean the wound and surrounding skin. Remove the release film.
- STEP 2** Apply the dressing over the wound.
- STEP 3** Place a secondary dressing, such as gauze sheet, Alexer foam dressings.
- STEP 4** Fix the secondary dressing on the top of the layer.



DESCRIPTION

Alexer® silicone wound contact layer dressing is a primary dressing for use when adherence to the wound is a potential problem. It's soft silicone thin and transparent dressing that conforms to the shape of your wound.



It is used to treat areas with skin tears and abrasions, foot and leg ulcers, blistering, and partial/full thickness grafts.

Absorbent pad can be changed without damaging the primary silicone wound contact layer.

APPLICATIONS

Alexer® silicone wound contact layer dressing should be combination with secondary absorbent dressing



| Type | Size | Package | Ref.No. | Type | Size | Package | Ref.No. |
|---|----------|---------------------|-----------|--|----------|---------------------|-----------|
|  one-sided adherent | 10X10cm | 10pcs/bx,40bxes/ctn | S60011001 |  double-sided adherent | 7.5X10cm | 10pcs/bx,40bxes/ctn | S60012001 |
| | 7.5X10cm | 10pcs/bx,40bxes/ctn | S60011002 | | 10X10cm | 10pcs/bx,40bxes/ctn | S60012002 |
| | 20X30cm | 10pcs/bx,40bxes/ctn | S60011003 | | 20X30cm | 10pcs/bx,40bxes/ctn | S60012003 |